

Air tightness and ventilation

Energy is not only lost through walls and roofs of buildings, but also through unnecessary draughts and leaks. These making buildings more costly to heat, increasing energy bills and carbon emissions.

Houses need ventilation to ensure the internal environment remains healthy for its occupants. Pollutants from us and our activities (such as CO₂ and Volatile Organic Compounds) need to be removed from buildings, together with water vapour. Persistently excessive amounts of moisture in air can result in condensation, trigger mould growth, increase dust mite activity and have implications for health.

Ventilation also prevents the build up of moisture in building fabrics, such as timber joists, which may lead to decay or attack by insects. This fact sheet only considers ventilation of occupied rooms and not areas such as sub-floors or roof voids where ventilation must carry on unheeded.

What is ventilation?

A building is not only ventilated through open windows, trickle vents and extractors in use but also by *infiltration* of the building fabric e.g. air drawn through gaps in windows and doors, up between floor boards from voids below and through walls, especially where there is plaster missing.

In older buildings, a significant amount of air is drawn through the building by open chimneys, whether in use or not.

How much ventilation does a building need?

This is dependent on a number of factors:

- How many people live in the house and their lifestyle of the occupants - like whether clothes are dried indoors
- The construction and type of building materials used
- Any inherent building moisture problems such as rising damp
- Use of boilers or stoves.

Despite the UK having around 6 million homes which were built before 1919, there is little knowledge about how the ventilation needs of these buildings differ from those of modern homes. However, research is currently being undertaken by bodies such as [Historic Scotland](#), [English Heritage](#) and the [Society for the Protection of Ancient Buildings](#) (SPAB) into how older buildings perform (references overleaf).

How much ventilation is a particular house currently receiving?

The amount of deliberate ventilation is going to depend on how often windows are opened and whether extractor fans are fitted and used in kitchens and bathrooms. This will be supplemented by air being drawn by any open chimneys or flues.

With respect to infiltration, this can vary dramatically and just because you live in an older house, you should not assume it is more “leaky” than a modern one – in fact, a Building Research Establishment study concluded buildings constructed between 1930 and 1980 had more infiltration than Victorian ones.

Many older homes receive the majority of their ventilation from draughts and air flow through cracks and gaps in the building fabric, and would benefit from actions to make them more air tight. However, if you are going to increase the air tightness, you still need to make sure there is enough ventilation to maintain a good indoor air quality.

A way of quantifying the level of infiltration is by performing an air permeability or blower door test. The result is measured in m^3 per hour per m^2 of total building envelope ($\text{m}^3\text{h}^{-1}\text{m}^{-2}$ @50Pa) or air changes per hour.

This test is a requirement for new build houses and can identify where the main infiltration points are in an older home (using either thermal imaging or smoke pens), allowing problem areas to be targeted during refurbishment.

What about using mechanical ventilation?

Mechanical ventilation may improve the living conditions in homes and can potentially reduce energy bills, but this relies on buildings having been made relatively air tight before they are installed.

In addition to opening windows, trickle vents and extractors, other forms of mechanical ventilation include:

- Single room heat recovery units – fitted like an extractor fan, but with a heat exchanger to recover heat from air being extracted and transfer it to the air being pulled into the house.
- Positive input ventilation - air is pushed into the building as a whole, forcing moist air inside the building to leave through the infiltration points.
- Whole house ventilation – where the air supply and extract from rooms in controlled mechanically
- Whole house mechanical ventilation with heat recovery (MVHR) – control of the air supply and extract, with heat from the outgoing air recovered and used to heat the cooler incoming air in winter.

To save money on heating bills by using MVHR, it is widely held that air permeability should be less than $3 \text{ m}^3\text{h}^{-1}\text{m}^{-2}$ @50Pa and ideally $1.5 \text{ m}^3\text{h}^{-1}\text{m}^{-2}$ @50Pa.

At infiltrations greater than these, the air may not be travelling the designed paths and MVHR may not prove as effective as it should be. Though it will remove moisture problems from kitchens and bathrooms, it will prove an expensive way of achieving this, and in this instance, installing or improving extraction would be considerably cheaper.

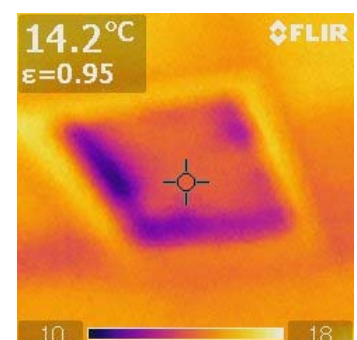
What should I do next?

There are a number of things you can do at minimal cost to reduce energy loss through excessive ventilation in older houses:

- Try to reduce how much moisture you produce in your home – like trying to dry clothes outside wherever possible – a family can put up to 15kg of water **per day** into the air in their home!
- Make sure you use the extraction from your kitchen and bathroom or you get into the habit of opening the window when cooking / bathing.
- Unused chimneys – reduce the air flow through using a chimney balloon or a bung of newspaper/rags
- Draught proofing – a key part of reducing infiltration is attention to detail and much can be done on a DIY basis:
 - Ensuring windows and doors are draught proofed including letter boxes
 - Sealing gaps between floor boards and around room edges
 - Draught proof and insulate loft hatches – the thermal image shows cold air coming in around a loft hatch
 - Pay particular attention to where waste pipes go through walls and floors as there may be gaps around them.

However, always ensure there is adequate ventilation to provide good air quality and supply for any heating appliances.

If a major refurbishment of a property is being considered, further measures action be taken to reduce unwanted air flows, but these will vary between buildings and a blower door test would be advised.



Where can I find out more information?

<p>Energy Saving Trust See their publications on air tightness and draught proofing at www.energysavingtrust.org.uk/publications/search</p>	
<p>Historic Scotland See their publication '<i>Indoor environmental quality in refurbishment</i>' (Technical paper 12) at www.historic-scotland.gov.uk</p>	<p>Society for Protection of Ancient Buildings Study of a group of older dwellings - <i>SPAB Building Performance Survey Interim Report 2011</i> www.spab.org.uk</p>
<p>Green Footsteps Information on ventilation and condensation in Lakeland dwellings, research information. www.greenfootstepscumbria.co.uk</p>	<p>HEVAC Residential Ventilation Association Information on ventilation equipment available www.feta.co.uk</p>



CLASP.



Delivered by: On behalf of:
Cumbria Action for Sustainability. Registered Charity 1123155 Company No: 6492907
Registered Office: The Office, Mardale Rd, Penrith, CA11 9EH. Tel. 01768 210276 Email. office@cafs.org.uk

Please note: the information provided in this factsheet is guidance only, for use at the client's discretion. We in no way guarantee that should the information be acted upon, that planning permission would be granted. It is recommended that you consult with your local planning authority to ensure that local planning requirements are fully addressed prior to any renewable energy installation.

Factsheet produced by D. Hubbard of Green Footsteps Ltd on behalf of CAFS. Email info@greenfootstepscumbria.co.uk Tel. 01539 823119
Images courtesy of Green Footsteps. Published November 2011